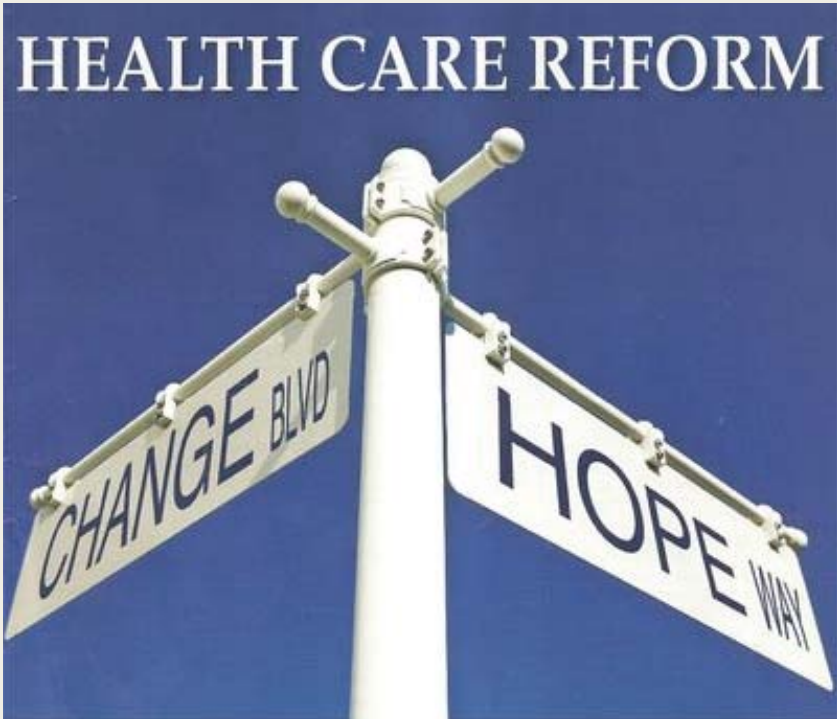


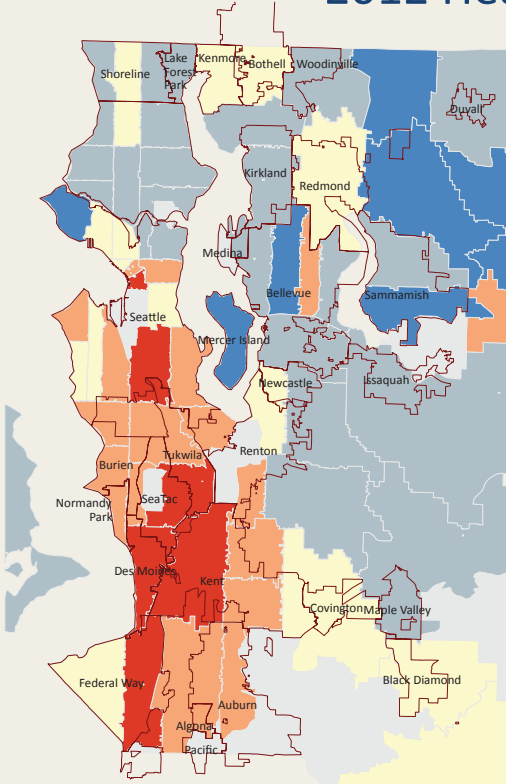


# Homeless Youth & Young Adult Healthcare Outreach & Enrollment

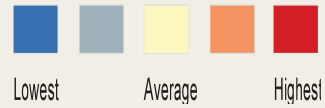
SKCCH Meeting – March 11, 2014  
Tabitha Jensen, Teen Feed Executive Director



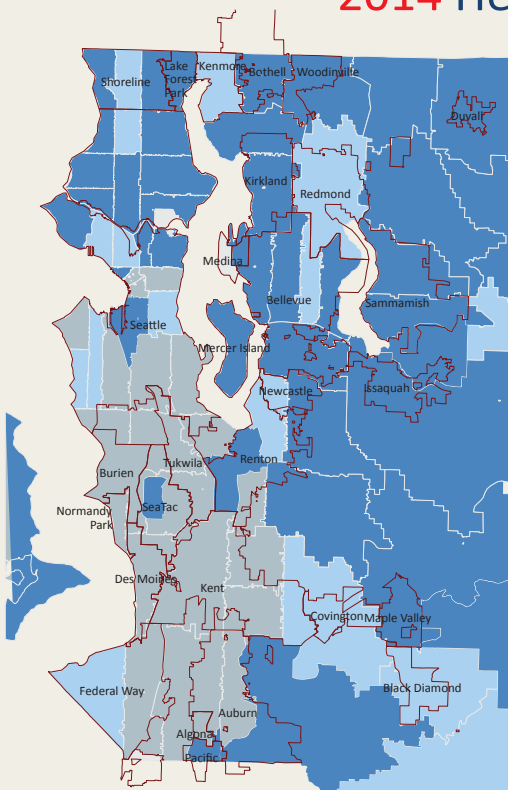
## 2012 Healthcare Insurance Access



**Uninsured  
3% - 30%**



## 2014 Healthcare Insurance Access



**After Healthcare  
reform:  
1% to 10%  
uninsured  
4% overall**



## Did You Know?

- Youth who age out of foster care can re-enroll or retain Medicaid coverage until the age of 26
- The Washington Health Care Authority (HCA) has funded a dedicated employee to process complex Medicaid applications for homeless youth
- Medicaid eligibility spans zero income to \$15,856 –or- 138% of the Federal Poverty Level; threshold changes depending on # in household

## Did You Know?

- Not only is Washington State a leader in the implementation of the Affordable Care Act, but King County is the **NUMBER ONE** county in the entire United States for number of enrollments!



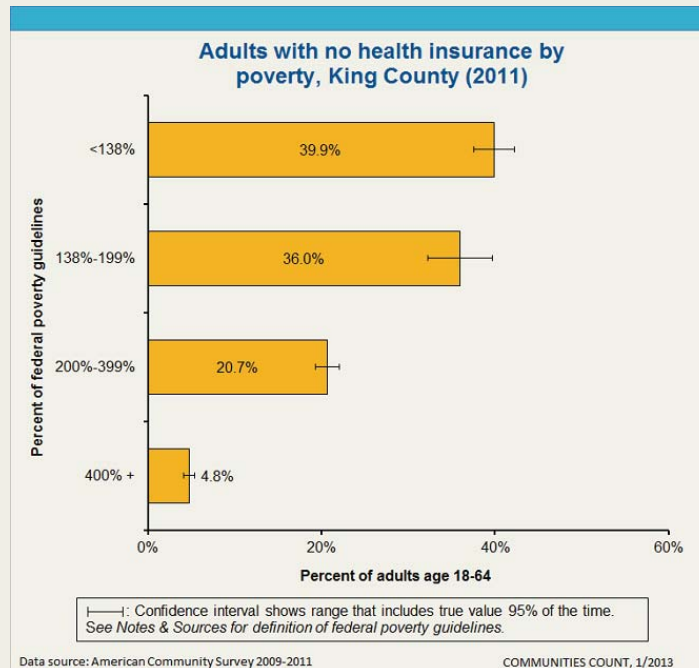
## Expanded Coverage in King County

may ultimately result in Medicaid access for over **79,000** uninsured King County residents!

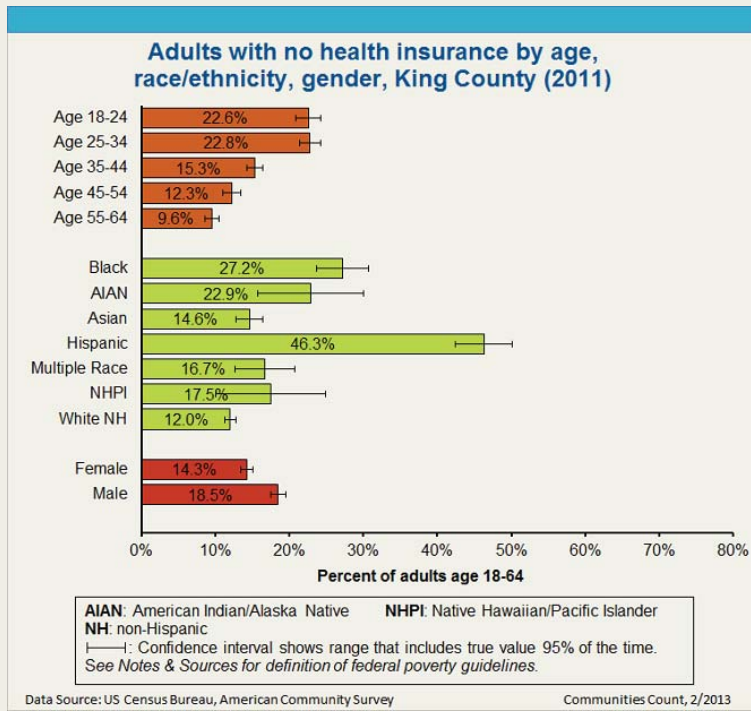
Many of these newly eligible residents are guests and clients of local youth & young adult providers

7

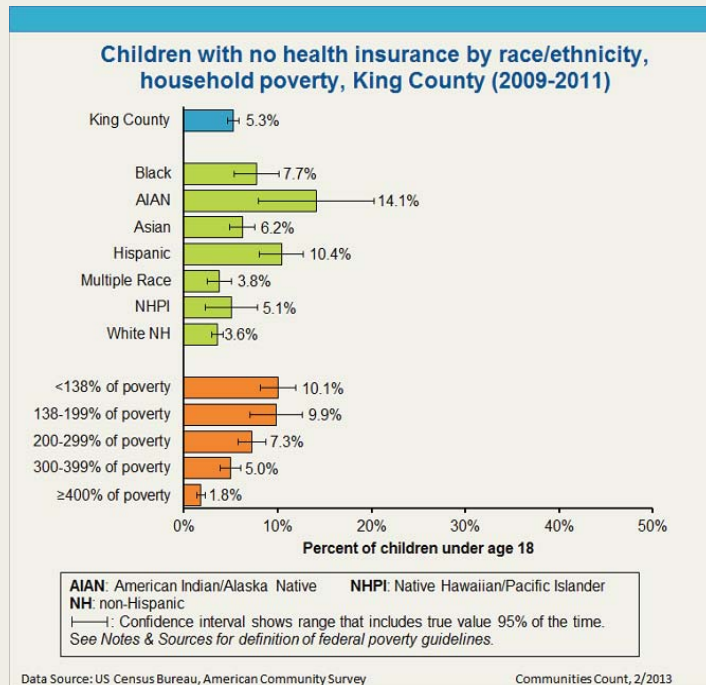
## Healthcare Access is a Social Justice Issue!



# Healthcare Access is a Social Justice Issue!



# Healthcare Access is a Social Justice Issue!



## Medicaid Managed Care Providers in King County CLIENTS HAVE CHOICE!



11



## Healthcare Enrollment Philosophy

- Access to healthcare can measurably improve outcomes for youth facing mental health and chemical dependency challenges
- Positive outcomes of preventative care
  - Wellness screenings, immunizations, pre-natal care, HIV and other STI testing, reproductive health, and more...
- Teen Feed's philosophy is that healthcare is a basic need as fundamental as food and housing



## Healthcare Enrollment Support

- Teen Feed is only youth-specific In-Person Assister (IPA) Organization contracting directly with the Health Benefit Exchange in Washington State
  - Within KC Lead (PHKC) network, Friends of Youth contracted to provide outreach services
- Our IPA approach is non-invasive and voluntary
  - Medicaid and healthcare enrollment is framed similarly to other life goals such as job-seeking and stable housing



## Healthcare Enrollment Support

- How can Teen Feed help your organization?
  - On-site enrollment events
    - Recurring events with a certified IPA
  - Telephone and email support
    - [healthcare@teenfeed.org](mailto:healthcare@teenfeed.org)
    - 206.522.4366
  - Community partnerships that strengthen our ability to assist youth and providers
    - WithinReach WashingTEEN Help partner
    - King County Managed Care Organization partner
      - All 5 KC providers: Community Health Plan WA, Molina, Coordinated Care, Amerigroup, and United Healthcare

Questions?

