

# BHRD CRISIS SYSTEMS AND SERVICES

WHAT IS A  
BEHAVIORAL  
HEALTH  
ADMINISTRATIVE  
SERVICE  
ORGANIZATION  
(BH-ASO) ?

- The BH-ASO structure is part of the Washington Health Care Authority's Fully Integrated Managed Care (FIMC) model, and most services for Apple Health (Medicaid) clients are provided by the Managed Care Organizations (MCOs)



# Health Care Authority (HCA)

Medicaid

Non-Medicaid

## Contracted Managed Care Organizations

Amerigroup

Community Health Plans of Washington

Coordinated Care

Molina Healthcare of Washington

United Health Care

Medicaid

# King County Behavioral Health Funding Structure



## STATE FUNDED AND OTHER (BH-ASO)

- Designated Crisis Responders (DCR)
- Emergency Line
- Prevention Services
- Federal Block Grant Funded Services (MH & SUD)
- Children's Crisis Outreach Response System

## KING COUNTY INTEGRATED CARE NETWORK (KCICN)

- Outpatient Behavioral Health Services
- Mental Health Behavioral Health Residential Programs
- Substance Use Disorder Residential Treatment
- Health Homes Coordination
- Program for Assertive Community Treatment (PACT)
- Detoxification Services

## Locally-Funded

- All MIDD programs
- Supported Employment Services (SEP)
- Education and Workforce Development

# ROLE OF THE BH-ASO

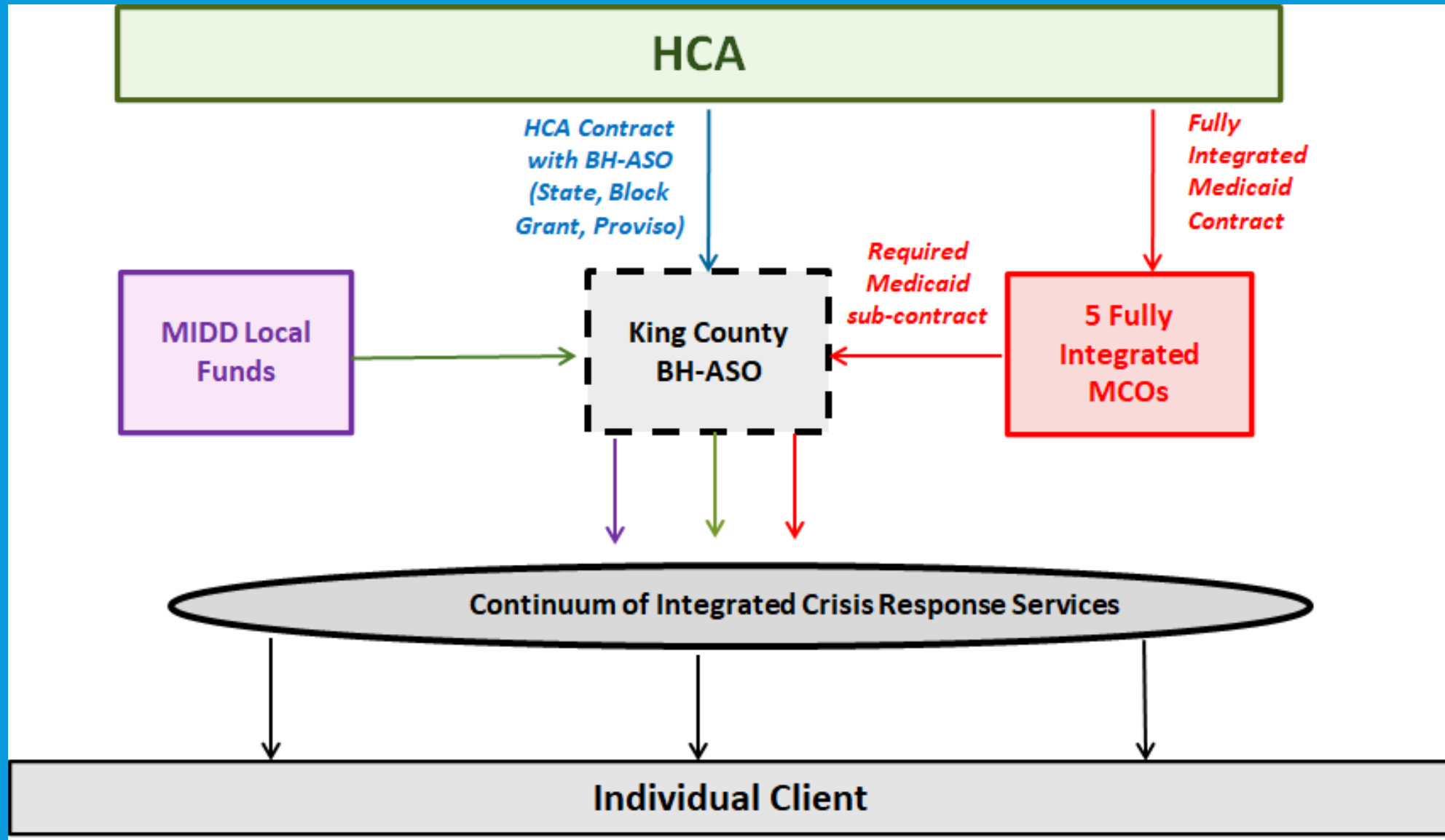
## State-funded services for Non-Medicaid

- Federal block grant funded services
- Western State Hospital liaison functions
- Other specialty programs -AOT, Peer Bridgers, PACT, RNP, JTS, Ombuds Drug Court adult, Juvenile Drug Court, FYSPRT, Trueblood, New Journeys

## Crisis Services for All Community Members

- Medicaid funded crisis services
- Designated Crisis responders (DCRs)
- Administration of involuntary commitment statutes(RCW 71.05, RCW 71.34)
- Mobile Crisis Response
- 24/7 Crisis Line

# CRISIS SYSTEM MANAGEMENT UNDER INTEGRATED MANAGED CARE (IMC)



# BH-ASO SERVICES: CRISIS SERVICES



A 24/7/365 regional crisis hotline for Mental Health and Substance Use Disorder crises



Mobile Crisis Outreach



Designated Crisis Responders



Secure Withdrawal Management and Stabilization



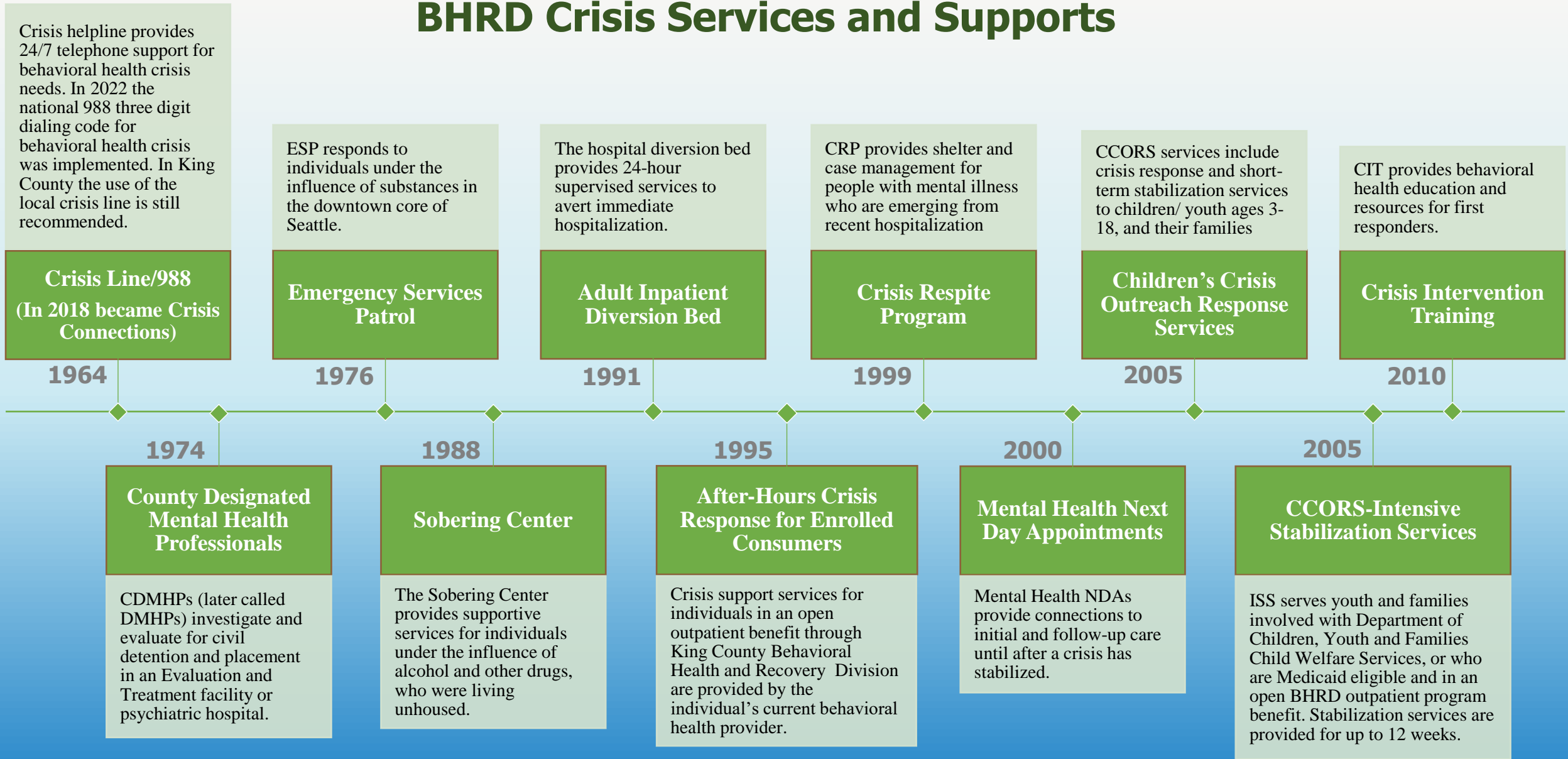
Involuntary Treatment

# Crisis Continuum



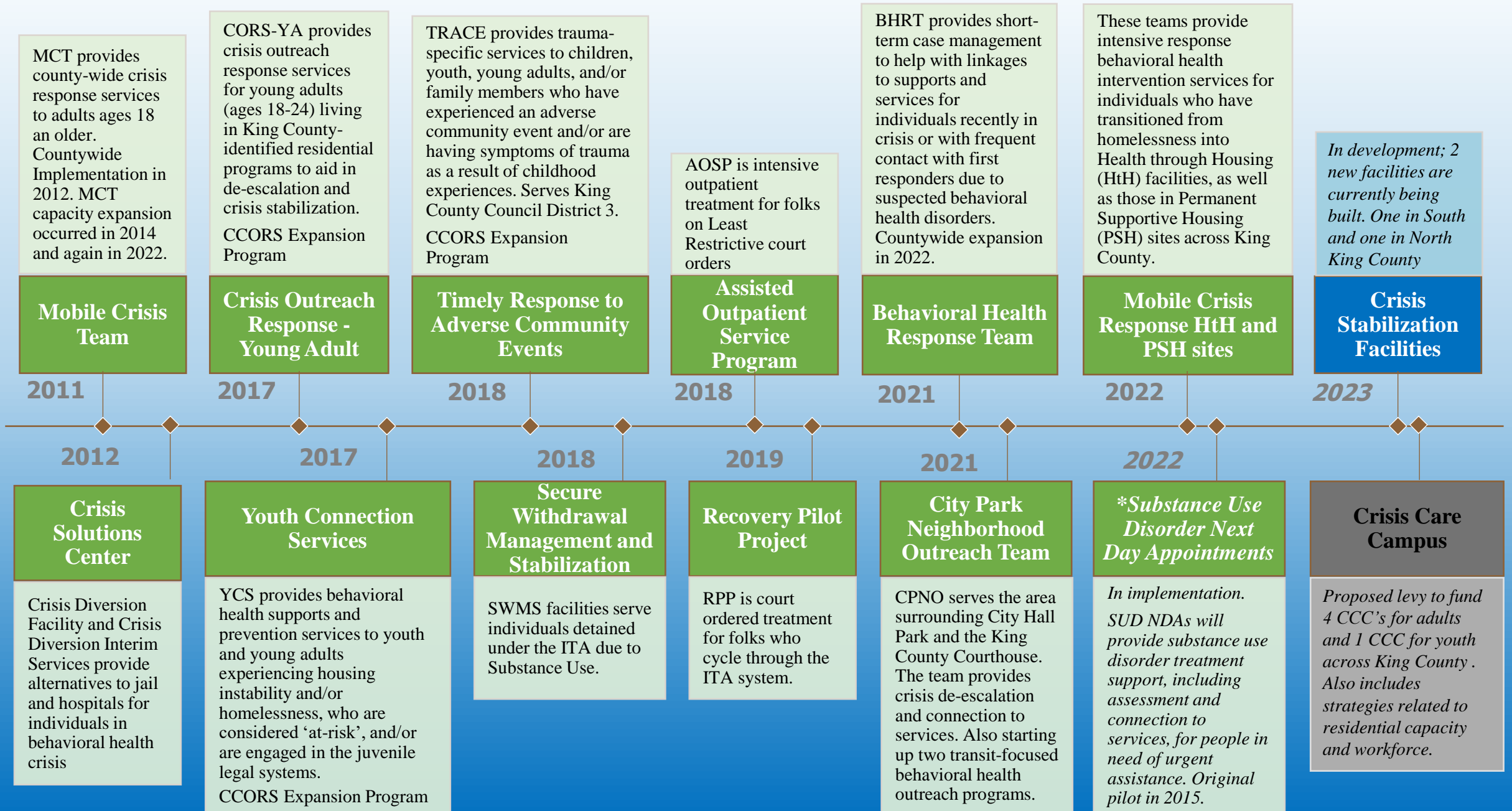
- Minimum required BH-ASO services
- Supplemental crisis services, funded in part by local dollars

# BHRD Crisis Services and Supports

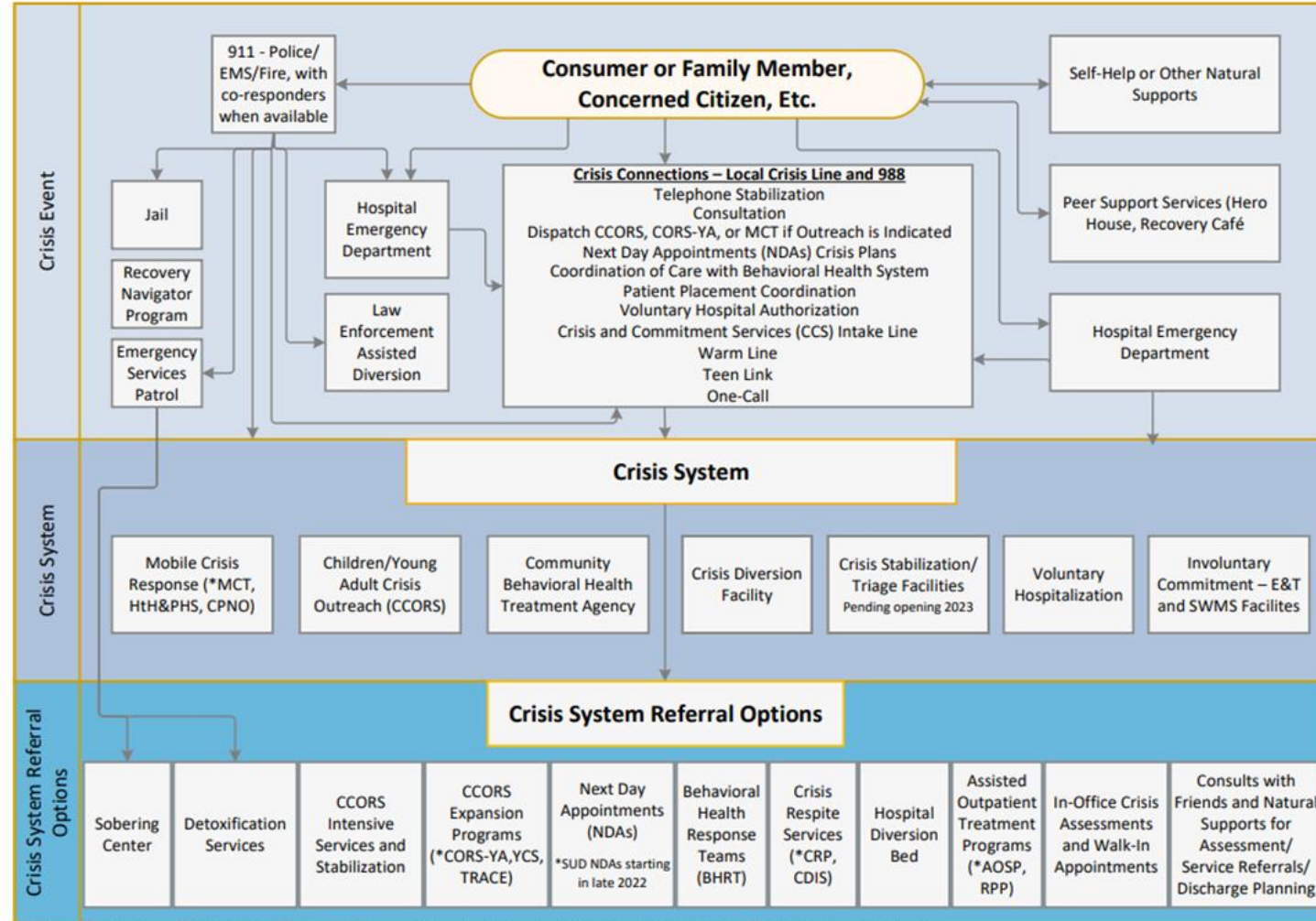




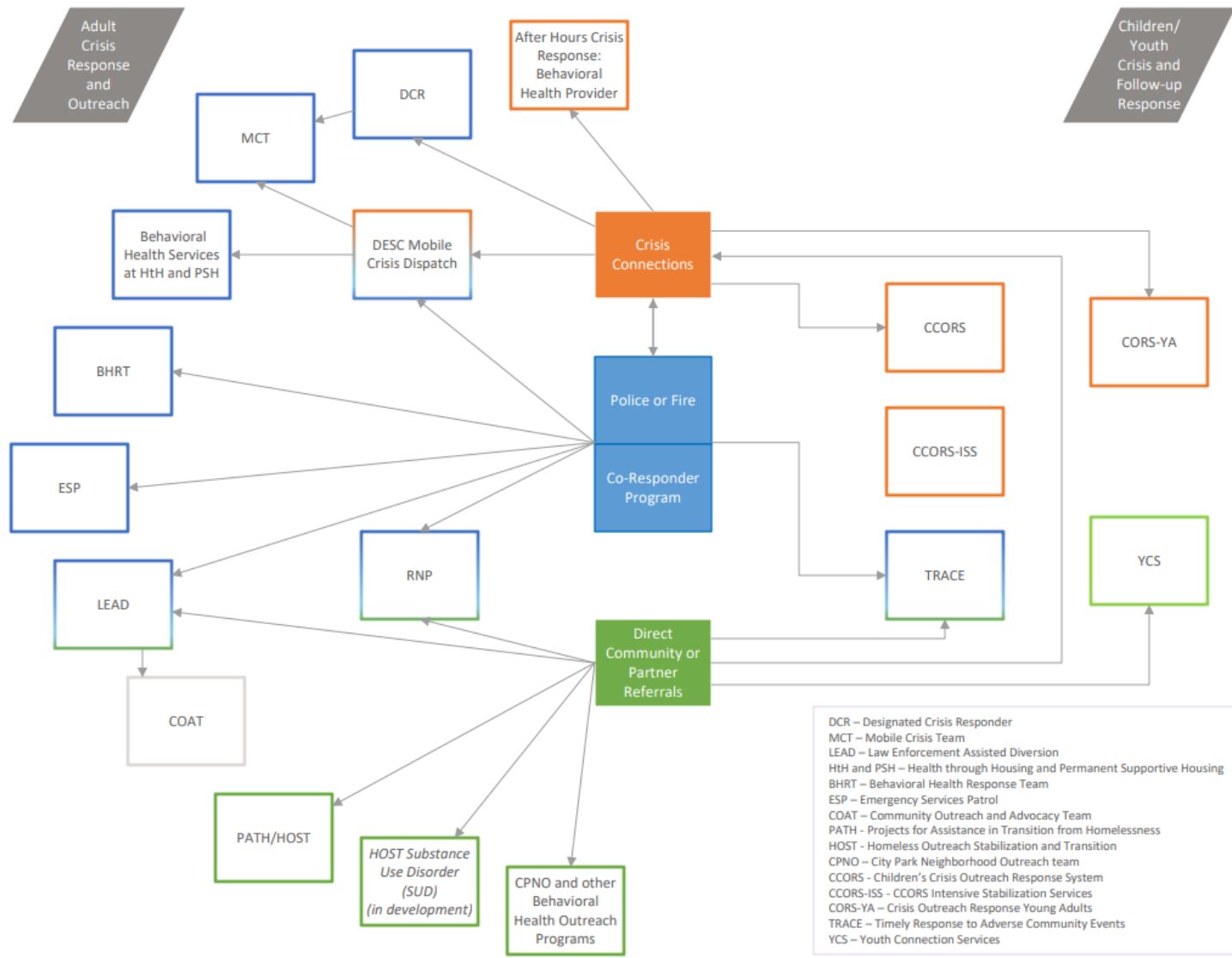
# BHRD Crisis Services and Supports



## King County Behavioral Health Administrative Services Organization Crisis System Map



\* MCT-Mobile Crisis Team; HTH&PSH-Health to Housing and Permanent Supportive Housing; CPNO-City Park Neighborhood Outreach; E&T-Evaluation and Treatment; SWMS-Secure Withdrawal Management Services; CORS-YA-Crisis Outreach Services Young Adults; YCS-Youth Connection Services; TRACE-Timely Response to Adverse Community Events; SUD-Substance Use Disorder; CRP-Crisis Respite Program; CDIS-Crisis Diversion Interim Services; AOSP-Assisted Outpatient Service Program; RPP-Recovery Response Pilot



# QUESTIONS?

For more information, contact:

- Susan Schoeld, Crisis Triage Administrator
- 206-263-8967 or [susan.schoeld@kingcounty.gov](mailto:susan.schoeld@kingcounty.gov)

